

SIZING

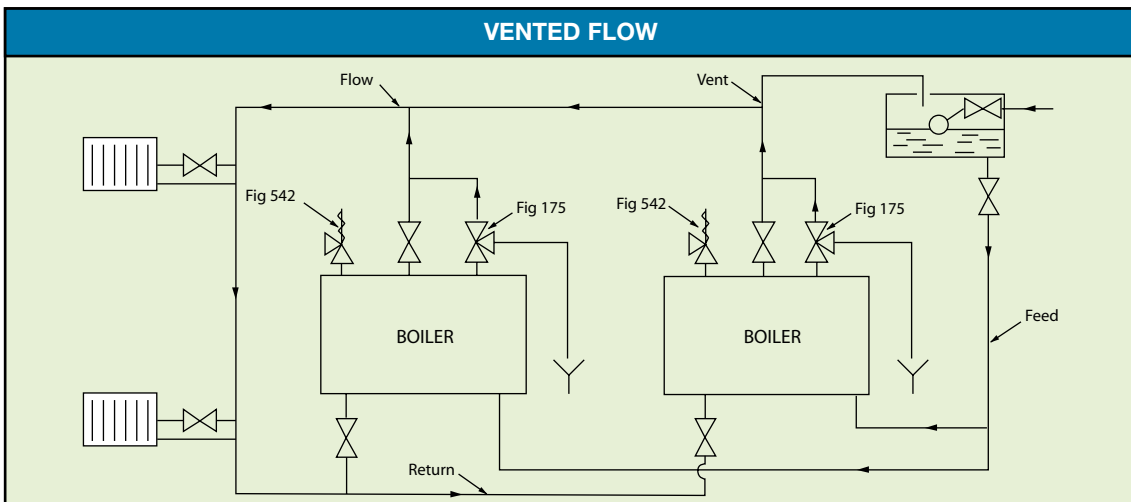
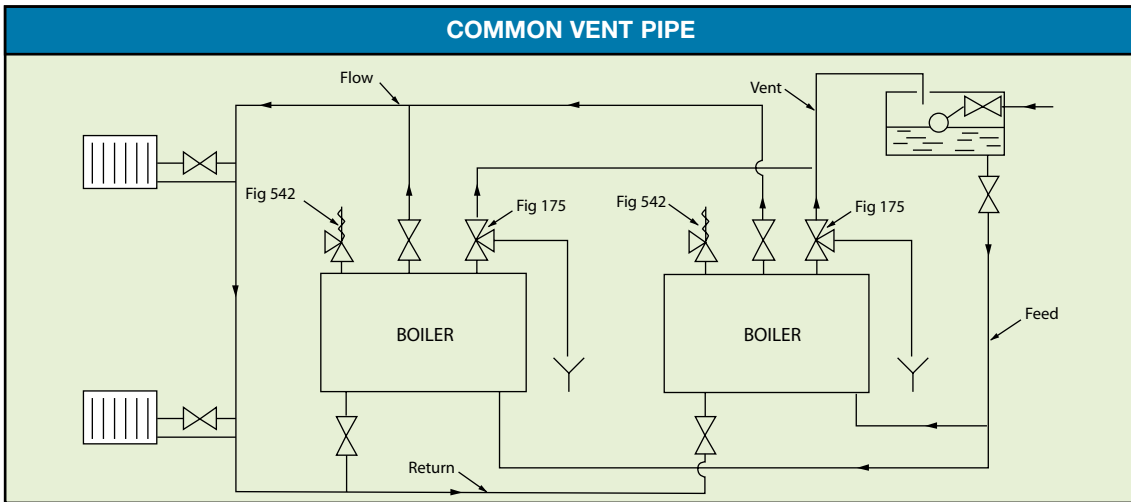
To provide adequate emergency steam relief capability, vented hot water systems require the fitting of a suitably sized vent pipe in addition to a safety relief valve (Fig 542). The following sizes are specified in BS 779, BS 853 & BS 855.

VENT PIPE						
SIZE	DN20*	DN25	DN32	DN40	DN50	DN65
kW	44	60	150	300	600	above 600

To convert to Btu/hr multiply by 3,400.

*The minimum size of vent pipe permitted by the above BS specifications is 25mm
The rating given for the DN20 size is only for applications outside the scope of these standards.

INSTALLATION



NB. In both types of installation, there must be no isolating valve fitted between the Fig 175 and the boiler, vent pipe or drain.

NABIC®

DELTA FLUID PRODUCTS LTD
 Delta Road, Parr, St. Helens WA9 2ED, UK
 Tel: +44 (0) 1744 611 811 Fax: +44 (0) 1744 453 675
enquiry@deltafluidproducts.com
www.deltafluidproducts.com

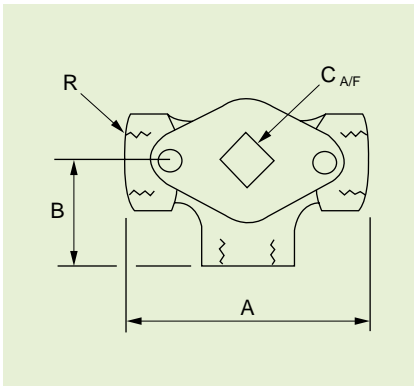
NABIC®

THREE WAY VENT COCK

APPLICATIONS

The Fig 175 Three Way Vent Cock has been designed for use on vented hot water systems, to ensure there is a permanent connection from the boiler or calorifier to atmosphere. Fitting a Fig 175 allows the use of a single common vent pipe, and permits continued operation of the system whilst maintenance is carried out on an individual unit.

DIMENSIONS



SIZE DN	R BSP	A mm	B mm	C mm	WEIGHT kg
20	3/4	95	38	15	1.4
25	1	108	46	18	2.0
32	1 1/4	127	59	22	3.2
40	1 1/2	146	67	27	4.8
50	2	165	78	38	8.2
65	2 1/2	181	89	44	11.3
65Flg	-	205	89	44	16

Fig 175



BODY MATERIAL	: GUNMETAL
MAXIMUM WORKING PRESSURE	: 7 bar
MAXIMUM TEMPERATURE	: 100 deg. C

CONSTRUCTION

The Fig 175 is of gunmetal construction, with all wetted parts manufactured from dezincification resistant materials. A stop incorporated in the gland locates with the plug to ensure that the boiler connection is always open to atmosphere, either via the vent of the drain. End connections have female threads to BS 21, and the DN65 size is also available with flanged boiler and vent connections. Fig 176 malleable iron operating keys, designed to fit the plug squares, can be supplied if required.

FEATURES

- BOILER CONNECTION PERMANENTLY OPEN
- NO WATER LOSS ON CHANGEOVER
- NINETY DEGREE OPERATION
- DEZINCIFICATION RESISTANT MATERIALS

NABIC®